

GRAPHTEC

PRECISION CUTTING SOLUTIONS

FC9000

ROLL FED CUTTER SERIES

FC9000



TAKE UP SYSTEM OPTIONAL



VIDEO TRAINING

PRESS PLAY ▶ GET TO WORK

HIGH PERFORMANCE • MAXIMUM PRODUCTIVITY

FC9000-75

30"



FC9000-100

42"



FC9000-140

54"



FC9000-160

64"



GRAPHTEC
Graphtec America, Inc.

PRECISION CUTTING SOLUTIONS

PERFORMANCE & PRECISION MEETS VALUE

Graphtec **FC9000 Series** is the most advanced, versatile roll fed cutting plotter to date. Revered for its dependable, high-precision cutting capabilities with both printed and unprinted materials, the FC9000 Series is the ultimate finishing solution for the wide format signage, apparel, and automotive industries. A robust feeding system, tool head, and new ARMS sensor further contribute to the FC Series' class leading performance.

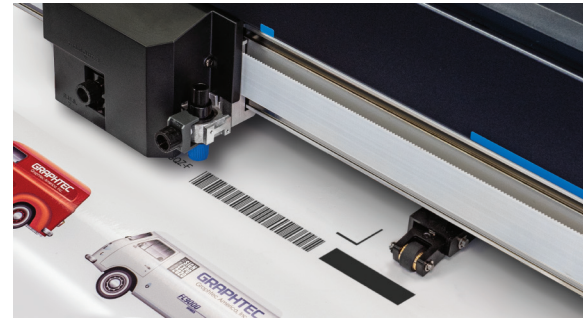
With the **USB Offline Operation** function, cutting data saved to USB flash memory can be output directly to the cutting plotter, enabling users to operate the FC9000 cutter without a computer.

Data Link Barcode System allows cutting different jobs with different data sequentially by detecting the Start Mark of each new job. By reading the Graphtec barcode, the FC9000 automatically detects its linked data from a PC or USB Drives. This function is available regardless of printer or RIP software used.

The FC9000 Series barcode data management system allows the **Continuous Cutting** of multiple jobs with different data sequentially by detecting the Start Mark of each new job.

With **Multiple Mark Compensation**, the FC9000 can significantly increase your productivity. Contour cutting is repeated for each copy, cutting production time for Print & Cut applications.

Auto Paneling automatically splits long-length jobs into smaller pages that are cut sequentially to prevent skewing.



Barcode Scanning System



USB Offline Operation



Powerful Cutting Head: 600gf

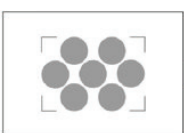


Intuitive 3.7" LCD Control Panel

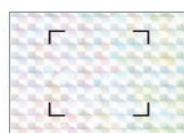
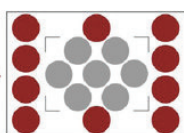
ARMS 8.0 NEW & IMPROVED FUNCTIONS

Advanced Registration Mark Sensing system delivers precise Print & Cut results using sensors to detect registration marks and perform axis alignment. Efficiency boosting functions improve productivity for Print & Cut applications such as labels and decals.

Expanded Contour Cutting Area expands the Print & Cut area to include objects outside of the registration marks. Production efficiency is enhanced and media waste is reduced.



Expanded Contour Cutting Area



Reversed Color Registration Marks



Middle Marks on X & Y-axis

Segment Area Compensation (X-Y) Recognizes middle marks between the registration marks to correct X / Y-axis distortion for greater accuracy when cutting longer length media.

Reversed Color Registration Marks With this reversed color output, sufficient contrast is created for contour cutting of preprinted ultra glossy & reflective media.

PRECISION CUTTING SOLUTIONS

PRODUCTION CAPABILITIES



600gf Cut Force, 58.5"/s Speed for up to 59.1mil Media Thickness

The FC9000 Series offers best-in-class productivity and abilities with wider range of compatible media. Featuring blazing fast **58.5"/s** cutting speeds for media up to **59.1 mil** at an impressive cutting force of **600 gf**.

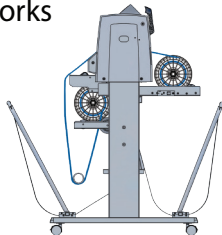
Reliable Long-length Tracking with the Auto Take-up Reel System

(FC9000-140 & 160 models only)

The optional auto take-up system boosts production efficiency by automatically winding rolls of media using the equipped infrared sensor.



The Data Link / Bar Code feature works with the Take-up System to allow precision tracking of multiple jobs per roll up to 65 ft of media.



- FC9000-140 (OPH-A43)
- FC9000-160 (OPH-A44)



STANDARD ACCESSORIES



Blade Holder:
PHP33-CB09N-HS



Media Flanges:
Ensures Accurate Media Tracking



Fiber Pen: Lumocolor-311-BK
Pen Adapter: PHP31-FIBER



Blade:
CB09UB

Blade Loupe: PM-CT-001
This standard accessory helps to easily adjust blade length



Included Design Plug-in and Software:

Graphtec provides you all of the tools necessary to create professional products with confidence.

- **Cutting Master 4 Plug-in:**
Adobe Illustrator (PC, MAC)
CorelDRAW (PC)



- **Graphtec Pro Studio:** Design Software - PC
- **Graphtec Studio:** Design Software - MAC
- **Windows Driver:** AutoCAD etc.

GRAPHTEC 3 YEAR STANDARD WARRANTY

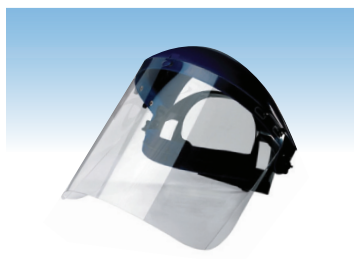
MARKET APPLICATIONS



SYMPATICO
DESIGN



High Intensity Reflective



Safety Shielding

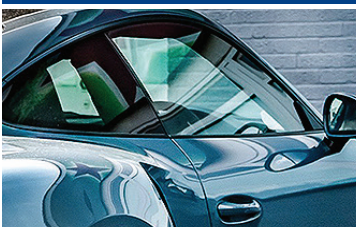


Sandblast Masking



Vinyl Signage

Print and Cut



Window Tinting Film



Vinyl Decals



Paint Protection Film

FC9000 SPECIFICATIONS



MODEL : **FC9000-75** **FC9000-100** **FC9000-140** **FC9000-160**

Configuration : Grit-rolling Plotter Driven by a Digital Servo Motor

Maximum Cutting Width : 30" 42" 54" 64"

*** Guaranteed Tracking :** 30" x 50' 42" x 50' 54" x 50' 64" x 50'

Mountable Media Width : 2" to 36" 2" to 48" 2" to 60" 2" to 72"

Maximum Cutting Speed : 58.5"/s @ 45° Direction

Cutting Force : 600 gf in 48 Steps

Number of Push Rollers : 2 Rollers 3 Rollers 4 Rollers 4 Rollers

Mountable Number of Tools : 1 Tool (cutting blade, plotting pen or pouncing tool) in standard;
2 Tools (cutting blade and plotting pen) when second pen-holder (optional) is installed

Minimum Character Size : Approximately 5 mm Alphanumeric (varies depending on character font and media)

ARMS / Barcode / Data Link : YES

Offline Output Function : USB Memory - 64 Files

Maximum Cross Cut Width : 30" 42" 54" 64"

Interface : Ethernet (10BASE-T/100BASE-TX) | USB 2.0 High Speed

Programmable Resolution : GP-GL™ mode: 0.1 / 0.05 / 0.025 / 0.01 mm • HP-GL®: 0.025 mm

Mechanical Resolution : 0.005 mm (5µm)

Maximum Media Thickness : 59.1 mil (1.48mm)

Condition Settings : Dual Configuration - 2 User Settings with 8 Separate Condition Settings per User

External Dimensions : w 53" x d 45" x h 48" w 65" x d 45" x h 48" w 77" x d 45" x h 48" w 87" x d 45" x h 48"

Weight : 108lbs 123lbs 141lbs 154lbs

Compatible Media : Self-adhesive Vinyl Film, Diamond Grade, Fluorescent Film, Reflective Film, Sandblast Resist Rubber High-intensity Reflective Film, Window Tint Film, Paint Protection Film, Automotive Paint Protection Film

* Operated with Graphtec specified cutting conditions and media. For long-length cutting, the basket is used



GRAPHTEC STANDARD WARRANTY: 3 YEARS PARTS & LABOR WITH ONLINE PRODUCT REGISTRATION

Software : **Cutting Master 4 - Plugin**
Adobe Illustrator - Mac/ Win
CorelDraw - Win

Graphtec Pro Studio
Design Software - Win

Graphtec Studio
Design Software - Mac

Windows Driver
AutoCad / Vector Drawing
Software Requiring a Driver

VIDEO TRAINING
PRESS PLAY ▶ GET TO WORK
www.graphtecamerica.com/videos

Graphtec Video Training is a comprehensive series of instructional videos that are key to fully understanding the capabilities of the **FC9000 Series** cutter. **Advanced Features** and **Optional Accessories** are also demonstrated in depth so you can be fully trained and ready to boost productivity by mastering all the features and utilizing the full potential of this powerful roll-fed cutter.